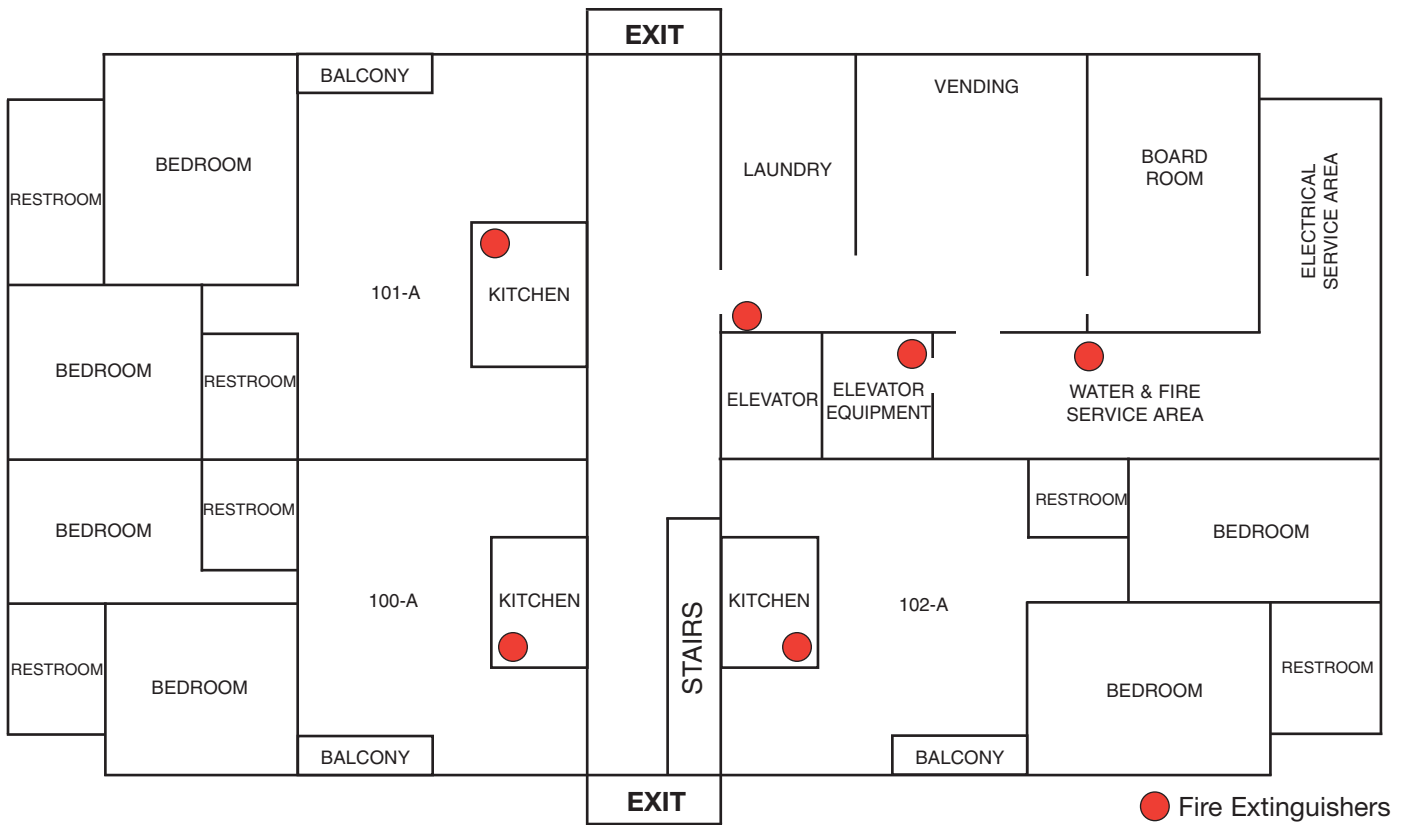


SENIOR APARTMENT BUILDING A: First Floor



● Fire Extinguishers
▲ Fire Pulls

Samaritan Avenue ▼

EMERGENCY DIAL 911

FIRE SAFETY

- 1) **MEMORIZE AN ESCAPE ROUTE.** During a fire you may not be able to see, so count the number of doors from your room to the exits.
- 2) **NEVER USE AN ELEVATOR DURING A FIRE.**
- 3) **FIRE/SMOKE OUTSIDE YOUR ROOM.** Call 911. If the door feels cool to the touch – get low, open the door, and go to the nearest exit. Take your key in case you can't make it to the exit. If the door is hot – keep the door closed and seal the space at the bottom of the door with a wet towel.

TORNADO SAFETY

- 1) **WATCH.** Conditions are right for a tornado. Turn on the TV or listen to the local radio station to monitor weather conditions. Be prepared to go to the shelter.
- 2) **WARNING.** Immediately proceed to the tornado shelter.

BUILDING EVACUATION

In the event the building must be evacuated (extended power outage during the night, bomb threat, or any other emergency that requires a building evacuation) residents are to proceed to the designated assembly location to check in with the Residence Life staff. Staff will provide further instructions. Upper convo, Redwood, or the gym may be open during inclement weather – providing these areas are safe to occupy.

TORNADO SHELTER

First floor apartment restrooms and vending machine area.

ASSEMBLY LOCATION

Primary:	Redwood
Secondary:	Student Center Auditorium
Tertiary:	Quad Flag Area