

## **CLASSROOM MUSIC SKILLS TEST: Ashland University Music Department**

**PIANO** – You prepare all songs from below and play an accompaniment in the indicated style as you sing it. You must stand while playing. You may use music.

Welcome (block chords)

Shoemaker's Dance (alternating bass block chords)

Listen to the Wind (left hand broken chords)

**GUITAR** (sing while playing) – You select two songs from below and play chords to accompany (either as quarter notes or half notes). You must sing while playing. You may use music.

Michael, Row the Boat Ashore

O Susanna

Oh, Be Joyful

**RECORDER** – You select two songs from below and may use the music. You must also play a D major scale (ascending and descending) and perform an 8-beat improvised response (antecedent-consequent).

We Three Kings

Hanukah

Scarborough Fair

**SINGING** – You select one song from below and sing it unaccompanied, as if leading a class. We will select an additional song for you to sing. These must be memorized.

Five Little Frogs

Biddy Biddy

Lone Star Trail

Tinga Layo

**MOVEMENT** – You will perform the following activities:

2 vs 3 – Perform duplets walking while you clap triplets, then switch on cue several times.

Walk/clap two different rhythmic units according to what is being played on the piano (*e.g.* – eighths and quarters, halves and quarters, halves and eighths, and other combinations): bass in feet, treble in hands

Rhythmic Canon, both interrupted and uninterrupted: walking the melodic rhythm after hearing it played

# CLASSROOM MUSIC SKILLS TEST - PIANO

## WELCOME

Wel - come, wel - come, ev' - ry - bod - y, wel - come! Wel - come, wel - come, ev' -

ry bod - y here! ry bod - y here! Wel - come, wel - come, ev' -

ry bod - y, wel - come! Wel - come, wel - come, ev' - ry bod - y here!

## SHOEMAKER'S DANCE

Wind and wind the thread and wind and wind the thread and pull, pull, tap, tap, tap.

Tra la la la la la la Tra - la la la la la la.

## LISTEN TO THE WIND

Whoo - ee! Whoo - ee! hear the wind, Whoo - ee!

Whoo - ee! hear the wind. Comes down the chim - ney,

Goes up the chim - ney, Whoo - ee! Whoo - ee! hear the wind.

# CLASSROOM MUSIC SKILLS TEST - PIANO STYLES

## BLOCK CHORD



Musical notation for the Block Chord exercise. The piece is in 4/4 time, divided into two 2-measure sections by a double bar line. The first section is in 4/4 time, and the second section is in 3/4 time. The right hand (treble clef) plays block chords, while the left hand (bass clef) plays a simple bass line. The key signature is one flat (B-flat).

## ALTERNATING BASS BLOCK CHORD



Musical notation for the Alternating Bass Block Chord exercise. The piece is in 4/4 time, divided into two 2-measure sections by a double bar line. The first section is in 4/4 time, and the second section is in 3/4 time. The right hand (treble clef) plays block chords, while the left hand (bass clef) plays an alternating bass line. The key signature is one flat (B-flat).

## L.H. BROKEN CHORD



Musical notation for the L.H. Broken Chord exercise. The piece is in 4/4 time, divided into two 2-measure sections by a double bar line. The first section is in 4/4 time, and the second section is in 3/4 time. The right hand (treble clef) plays block chords, while the left hand (bass clef) plays a broken chord pattern. The key signature is one flat (B-flat). The text "(Alberti bass)" is written above the left hand in the first section.

# CLASSROOM MUSIC SKILLS TEST - GUITAR

## MICHAEL, ROW THE BOAT ASHORE

Musical notation for the song "MICHAEL, ROW THE BOAT ASHORE". The key signature is two sharps (F# and C#), and the time signature is 4/4. The melody is written on a single staff. Chords are indicated above the notes: D, D, G, D, D, A7, D, A7, D. The lyrics are: "Mi - chael, row the boat a - shore, Hal - le - lu - jah. Mi - chael, row the boat a - shore, Hal - le - lu - jah."

## O SUSANNA

Musical notation for the song "O SUSANNA". The key signature is two sharps (F# and C#), and the time signature is 2/4. The melody is written on a single staff. Chords are indicated above the notes: D, D, D, A7, D, D, D, A7, D, G, G, D, A7, D, D, A7, D. The lyrics are: "I came from Al - a - bam - a with my ban - jo on my knee; I'm goin' to Lou - si - an - a my true love for to see. O Su - san - na, O don't you cry for me, For I've come from Al - a - bam - a with my ban - jo on my knee."

## OH, BE JOYFUL

Musical notation for the song "OH, BE JOYFUL". The key signature is two sharps (F# and C#), and the time signature is 4/4. The melody is written on a single staff. Chords are indicated above the notes: D, A7, D, A7, D, G, D, A7, D. The lyrics are: "Oh, be joy - ful, Oh, be ju - bi - lant, Put your sor - rows far a - way. We will sing a song of friend - ship, We will raise our voic - es strong. We re - joice and sing to - geth - er this hap - py day. We'll re - joice and sing to - geth - er the whole day long."

# CLASSROOM MUSIC SKILLS TEST - RECORDER

## WE THREE KINGS



## HANUKAH



## SCARBOROUGH FAIR



# CLASSROOM MUSIC SKILLS TEST - SINGING

## FIVE LITTLE FROGS



Five green and speck-led frogs Sat on a speck-led log Eat-ing some most de-li-cious bugs. (Yum! yum!)



One jumped in-to the pool Where it was nice and cool. Then there were four green speck-led frogs. (Glub! glub!)

# BIDDY, BIDDY



Bid - dy, bid - dy, hold on, lost my gold ring, One go to Kings - ton, come back a - gain.



Bid - dy, bid - dy, hold on, lost my gold ring. one go to Kings - ton, come back a - gain.

# LONE STAR TRAIL

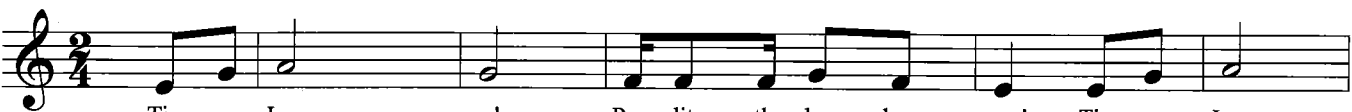


I start-ed on the trail on Junetwen-ty-third, I been punch-in' Tex-as cat-tle on the Lone Star Trail; Sing-in'



ki yi yip - pi yip - pi yay, yip - pi yay! Sing-in' ki yi yip - pi yip - pi yay!

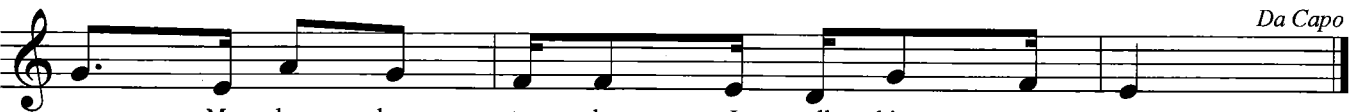
## TINGA LAYO



Tin - ga Lay - o! Run, lit - tle don - key, run! Tin - ga Lay -



o! Run, lit - tle don - key, run! My don - key run! yes, my don - key



no. My don - key stop when I tell him to go.