

CLASSROOM MUSIC SKILLS TEST: Ashland University Music Department

PIANO – You prepare all songs from below and play an accompaniment in the indicated style as you sing it. You must stand while playing. You may use music.

Welcome (block chords)
Shoemaker's Dance (alternating bass block chords)
Listen to the Wind (left hand broken chords)

GUITAR (sing while playing) – You select two songs from below and play chords to accompany (either as quarter notes or half notes). You must sing while playing. You may use music.

Michael, Row the Boat Ashore
O Susanna
Oh, Be Joyful

RECORDER – You select two songs from below and may use the music. You must also play a D major scale (ascending and descending) and perform an 8-beat improvised response (antecedent-consequent).

We Three Kings
Hanukah
Scarborough Fair

SINGING – You select one song from below and sing it unaccompanied, as if leading a class. We will select an additional song for you to sing. These must be memorized.

Five Little Frogs
Biddy Biddy
Lone Star Trail
Tinga Layo

MOVEMENT – You will perform the following activities:

2 vs 3 – Perform duplets walking while you clap triplets, then switch on cue several times.

Walk/clap two different rhythmic units according to what is being played on the piano (*e.g.* – eighths and quarters, halves and quarters, halves and eighths, and other combinations): bass in feet, treble in hands

Rhythmic Canon, both interrupted and uninterrupted: walking the melodic rhythm after hearing it played

CLASSROOM MUSIC SKILLS TEST - PIANO

WELCOME

Wel - come, wel - come, ev' - ry - bod - y, wel - come! Wel - come, wel - come, ev' -

ry bod - y here! ry bod - y here! Wel - come, wel - come, ev' -

ry bod - y, wel - come! Wel - come, wel - come, ev' - ry bod - y here!

SHOEMAKER'S DANCE

Wind and wind the thread and wind and wind the thread and pull, pull, tap, tap, tap.

Tra la la la la la la Tra - la la la la la la.

LISTEN TO THE WIND

Whoo - ee! Whoo - ee! hear the wind, Whoo - ee!

Whoo - ee! hear the wind. Comes down the chim - ney,

Goes up the chim - ney, Whoo - ee! Whoo - ee! hear the wind.

CLASSROOM MUSIC SKILLS TEST - PIANO STYLES

BLOCK CHORD

Musical notation for the 'BLOCK CHORD' exercise. It consists of two staves: a treble clef staff and a bass clef staff. The piece is divided into two measures by a double bar line. The first measure is in 4/4 time, and the second measure is in 3/4 time. In the first measure, the treble staff contains two block chords (triads) and the bass staff contains two quarter notes. In the second measure, the treble staff contains two block chords with repeat signs and the bass staff contains two quarter notes.

ALTERNATING BASS BLOCK CHORD

Musical notation for the 'ALTERNATING BASS BLOCK CHORD' exercise. It consists of two staves: a treble clef staff and a bass clef staff. The piece is divided into two measures by a double bar line. The first measure is in 4/4 time, and the second measure is in 3/4 time. In the first measure, the treble staff contains two block chords with repeat signs and the bass staff contains two quarter notes with repeat signs. In the second measure, the treble staff contains two block chords with repeat signs and the bass staff contains two quarter notes with repeat signs.

L.H. BROKEN CHORD

Musical notation for the 'L.H. BROKEN CHORD' exercise. It consists of two staves: a treble clef staff and a bass clef staff. The piece is divided into two measures by a double bar line. The first measure is in 4/4 time, and the second measure is in 3/4 time. In the first measure, the treble staff contains two block chords and the bass staff contains a broken chord pattern (Alberti bass) consisting of eighth notes. In the second measure, the treble staff contains two block chords with repeat signs and the bass staff contains a broken chord pattern (Alberti bass) consisting of eighth notes. The text "(Alberti bass)" is written in the bass staff of the first measure.

CLASSROOM MUSIC SKILLS TEST - GUITAR

MICHAEL, ROW THE BOAT ASHORE

Musical notation for the song "Michael, Row the Boat Ashore". The score is written in treble clef with a key signature of two sharps (F# and C#) and a 4/4 time signature. The melody consists of quarter and eighth notes. Chord symbols are placed above the staff: D, D, G, D, D, A7, D, A7, D. The lyrics are: "Mi - chael, row the boat a - shore, Hal - le - lu - jah. Mi - chael, row the boat a - shore, Hal - le - lu - jah."

O SUSANNA

Musical notation for the song "O Susanna". The score is written in treble clef with a key signature of two sharps (F# and C#) and a 2/4 time signature. The melody consists of quarter and eighth notes. Chord symbols are placed above the staff: D, D, D, A7, D, D, D, A7, D, G, G, D, A7, D, D, A7, D. The lyrics are: "I came from Al - a - bam - a with my ban - jo on my knee; I'm goin' to Lou - si - an - a my true love for to see. O Su - san - na, O don't you cry for me, For I've come from Al - a - bam - a with my ban - jo on my knee."

OH, BE JOYFUL

Musical notation for the song "Oh, Be Joyful". The score is written in treble clef with a key signature of two sharps (F# and C#) and a 4/4 time signature. The melody consists of quarter and eighth notes. Chord symbols are placed above the staff: D, A7, D, A7, D, G, D, A7, D. The lyrics are: "Oh, be joy - ful, Oh, be ju - bi - lant, Put your sor - rows far a - way. We will sing a song of friend - ship, We will raise our voic - es strong. We re - joice and sing to - geth - er this hap - py day. We'll re - joice and sing to - geth - er the whole day long."

CLASSROOM MUSIC SKILLS TEST - RECORDER

WE THREE KINGS

Musical notation for the song 'WE THREE KINGS'. It consists of four staves of music in treble clef, key of D major (one sharp), and 3/8 time. The melody is written on a single line. The first staff begins with a treble clef, a key signature of one sharp (F#), and a 3/8 time signature. The music features eighth and quarter notes, with some rests. The second staff continues the melody, ending with a fermata over a dotted quarter note. The third staff continues the melody. The fourth staff concludes the piece with a double bar line.

HANUKAH

Musical notation for the song 'HANUKAH'. It consists of three staves of music in treble clef, key of D major (one sharp), and 2/4 time. The melody is written on a single line. The first staff begins with a treble clef, a key signature of one sharp (F#), and a 2/4 time signature. The music features quarter and eighth notes. The second staff continues the melody. The third staff concludes the piece with a double bar line.

SCARBOROUGH FAIR

Musical notation for the song 'SCARBOROUGH FAIR'. It consists of two staves of music in treble clef, key of D major (one sharp), and 2/4 time. The melody is written on a single line. The first staff begins with a treble clef, a key signature of one sharp (F#), and a 2/4 time signature. The music features quarter and eighth notes. The second staff continues the melody and concludes with a double bar line.

CLASSROOM MUSIC SKILLS TEST - SINGING

FIVE LITTLE FROGS



Five green and speck-led frogs Sat on a speck-led log Eat-ing some most de-li-cious bugs. (Yum! yum!)



One jumped in-to the pool Where it was nice and cool. Then there were four green speck-led frogs. (Glub! glub!)

BIDDY, BIDDY



Bid - dy, bid - dy, hold on, lost my gold ring, One go to Kings - ton, come back a - gain.



Bid - dy, bid - dy, hold on, lost my gold ring. one go to Kings - ton, come back a - gain.

LONE STAR TRAIL

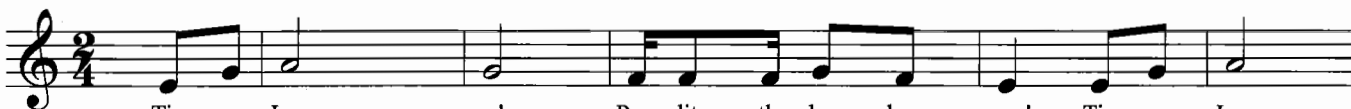


I start-ed on the trail on Junetwen-ty-third, I been punch-in' Tex-as cat-tle on the Lone Star Trail; Sing-in'

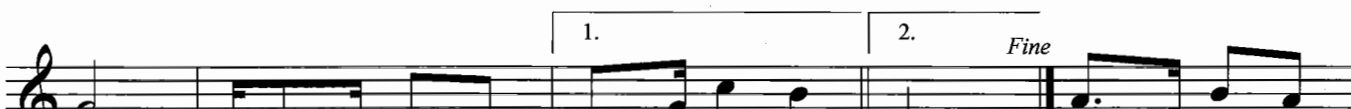


ki yi yip - pi yip - pi yay, yip - pi yay! Sing-in' ki yi yip - pi yip - pi yay!

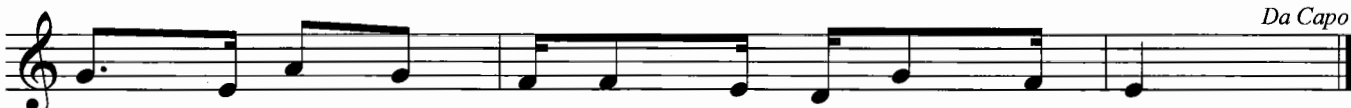
TINGA LAYO



Tin - ga Lay - o! Run, lit - tle don - key, run! Tin - ga Lay -



o! Run, lit - tle don - key, run! My don - key run! yes, my don - key



no. My don - key stop when I tell him to go.